

# Eureka®



10 YEAR FIREBOX WARRANTY

## Woodheating

# THE SELECTION SERIES



MODERNISTIC



INNOVATIVE



FUNCTIONALITY

INSPIRE YOUR CREATIVITY WITH  
DIVERSITY FROM EUREKA WOODHEATING

# MODULE - INSPIRE

INNOVATION, STYLE & CONTEMPORARY DESIGN



BENCH DIMENSIONS  
1200mm WIDE  
280mm HIGH  
550mm DEEP

● EFFICIENCY  
80%+

▲ EMISSIONS  
0.9 g/kg

■ CAPACITY  
260m<sup>2</sup>

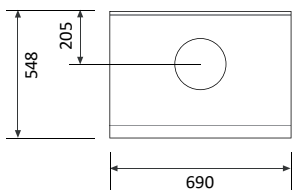
● EFFICIENCY  
76%+

▲ EMISSIONS  
1.3 g/kg

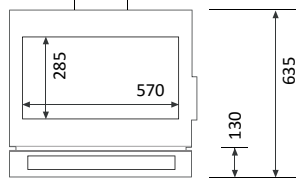
■ CAPACITY  
330m<sup>2</sup>

## PEARL MEDIUM

TOP VIEW

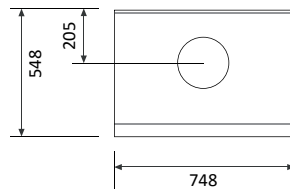


FRONT VIEW

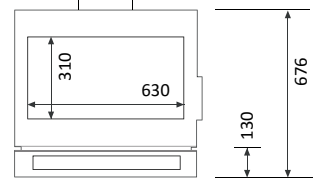


## RUBY LARGE

TOP VIEW



FRONT VIEW



## SPECIFICATIONS

MODULE TYPE	FLUE TYPE	CLEARANCE TO COMBUSTIBLES			MINIMUM HEARTH SIZE			
		REAR	SIDE	CORNER	WIDTH	DEPTH	THICKNESS	MM IN FRONT
PEARL MEDIUM	SOLID	155*	325	50	945	1005	140	330
PEARL MEDIUM	PERFORATED	50	325	75	945	900	140	330
RUBY LARGE	SOLID	50	325	50	1000	898	140	330
RUBY LARGE	PERFORATED	50	325	50	1000	898	140	330
PEARL ON BENCH	SOLID	155*	325	50	945	1005	9	300#
PEARL ON BENCH	PERFORATED	50	325	75	945	900	9	300#
RUBY ON BENCH	SOLID	50	325	50	1000	900	9	300#
RUBY ON BENCH	PERFORATED	50	325	50	1000	900	9	300#

### FLUE TYPE DEFINITIONS

# IN FRONT OF BENCH

**SOLID** = 6" TRIPLE SKIN (DEFAULT) FLUE KIT INCORPORATING A NON-PERFORATED PAINTED OUTER FLUE CASING BELOW CEILING LEVEL  
 \*NOTE: 180 deg. STAINLESS STEEL FLUE SHIELDING (900mm LONG INCLUDED IN WOODHEATER) **MUST NOT** BE USED FOR THE PEARL FREESTANDING & MODULE BUT **MUST BE** USED FOR RUBY FREESTANDING & MODULE

**PERFORATED** = 6" TRIPLE SKIN (DEFAULT) FLUE KIT INCORPORATING A 180 deg. PERFORATED PAINTED OUTER FLUE CASING WITH SOLID BACK BELOW CEILING LEVEL  
 NOTE: 180 deg. STAINLESS STEEL FLUE SHIELDING (900mm LONG INCLUDED IN WOODHEATER) **MUST BE** USED BETWEEN THE FIRST LENGTH OF ACTIVE FLUE & THE OUTER PERFORATED CASING DIRECTLY OFF THE APPLIANCE

# FREESTANDING

FUNCTIONALITY IS THE FOUNDATION

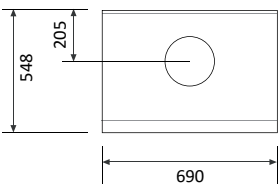


● EFFICIENCY 80%+ ▲ EMISSIONS 0.9 g/kg ■ CAPACITY 260m<sup>2</sup>

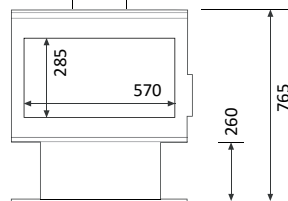
● EFFICIENCY 76%+ ▲ EMISSIONS 1.3 g/kg ■ CAPACITY 330m<sup>2</sup>

## PEARL MEDIUM

TOP VIEW

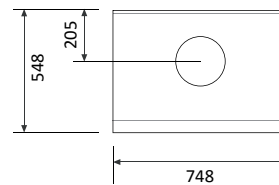


FRONT VIEW

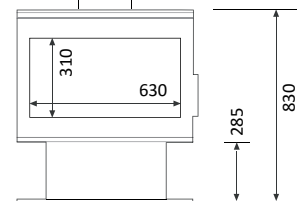


## RUBY LARGE

TOP VIEW



FRONT VIEW



## SPECIFICATIONS

FREESTANDING	FLUE TYPE	CLEARANCE TO COMBUSTIBLES			MINIMUM HEARTH SIZE			
		REAR	SIDE	CORNER	WIDTH	DEPTH	THICKNESS	MM IN FRONT
PEARL MEDIUM	SOLID	155*	325	50	945	1000	9	300
PEARL MEDIUM	PERFORATED	50	325	75	945	895	9	300
RUBY LARGE	SOLID	50	325	50	1000	895	9	300
RUBY LARGE	PERFORATED	50	325	50	1000	895	9	300

## FLUE TYPE DEFINITIONS

**SOLID** = 6" TRIPLE SKIN (DEFAULT) FLUE KIT INCORPORATING A NON-PERFORATED PAINTED OUTER FLUE CASING BELOW CEILING LEVEL  
 \*NOTE: 180 DEG. STAINLESS STEEL FLUE SHIELDING (900MM LONG INCLUDED IN WOODHEATER) **MUST NOT** BE USED FOR THE PEARL FREESTANDING & MODULE BUT **MUST BE** USED FOR RUBY FREESTANDING & MODULE

**PERFORATED** = 6" TRIPLE SKIN (DEFAULT) FLUE KIT INCORPORATING A 180 DEG. PERFORATED PAINTED OUTER FLUE CASING WITH SOLID BACK BELOW CEILING LEVEL  
 NOTE: 180 DEG. STAINLESS STEEL FLUE SHIELDING (900MM LONG INCLUDED IN WOODHEATER) **MUST BE** USED BETWEEN THE FIRST LENGTH OF ACTIVE FLUE & THE OUTER PERFORATED CASING DIRECTLY OFF THE APPLIANCE

# INSERT - IMAGINE

THE NEW SELECTION SERIES FROM EUREKA WOODHEATING



ZERO CLEARANCE INSERT  
FASCIA DEPTH 3mm (FLUSH FIT)



MASONRY INSERT  
FASCIA DEPTH 16mm



EFFICIENCY  
74%\*



EMISSIONS  
1.0 g/kg



CAPACITY  
240m<sup>2</sup>



EFFICIENCY  
68%\*

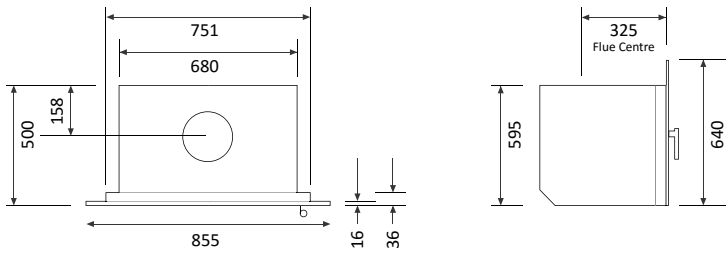


EMISSIONS  
1.4 g/kg

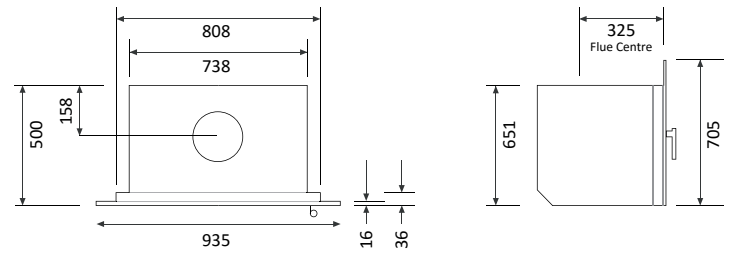


CAPACITY  
300m<sup>2</sup>

## PEARL MASONRY - MEDIUM



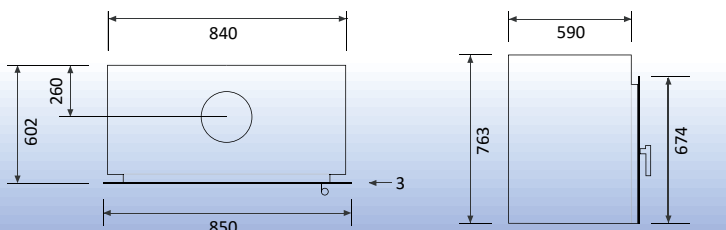
## RUBY MASONRY - LARGE



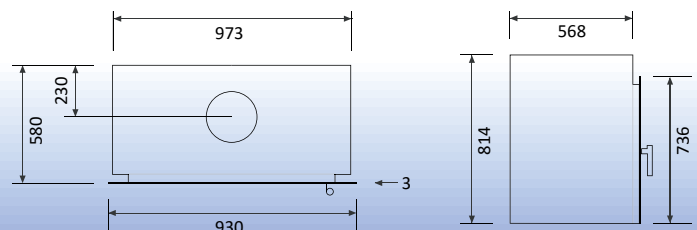
## SPECIFICATIONS

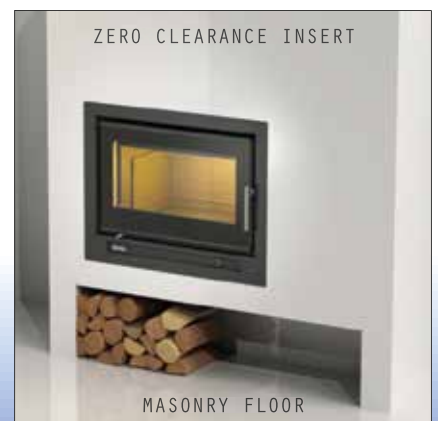
INSERT	CLEARANCE TO COMBUSTIBLES			MINIMUM HEARTH SIZE			
	SIDE UPRIGHTS FROM FASCIA EDGE	TO MANTLE SHELF FROM HEARTH	TO BREAST PLATE FROM HEARTH	WIDTH	DEPTH	THICKNESS	MM IN FRONT
PEARL MASONRY	55	1500†	1410	945	550	18	550†
PEARL ZERO CLEARANCE	55	1500†	1410	945	1185	18	550†
RUBY MASONRY	35	1500†	1410	1000	520	18	520†
RUBY ZERO CLEARANCE	35	1500†	1410	1000	1135	18	520†

## PEARL ZERO CLEARANCE - MEDIUM



## RUBY ZERO CLEARANCE - LARGE





INSPIRE  
CUSTOMISE ART  
EVOLVE HIGHLIGHT FLOW  
REFLECTION  
IMAGINE



# STYLISH, MODERN & INNOVATIVE

- DESIGNED & MANUFACTURED IN ARARAT, VICTORIA -
- HIGH OUTPUT & EFFICIENCY COMBINED WITH LOW EMISSIONS -
- SLEEK & MODERN DESIGN FEATURES UTILISING THE LATEST IN MANUFACTURING TECHNOLOGY -
  - FULL GLASS FRONTED DOOR FOR MAXIMUM VIEWING AREA -
  - DUAL-ACTION LATCHING MECHANISM WITH SAFETY POSITION -
- 6mm FULLY WELDED STEEL FIREBOX WITH A DUAL PRE-HEATED PRIMARY AIR CHAMBER -
  - 3 SPEED POWERFUL FAN WITH THERMOSTATIC CONTROL -
- COMPACT DIMENSIONS & CLEARANCES FOR EASE OF INSTALLATION -
- CAST IRON FIREBOX LINERS TO ENSURE MAXIMUM FIREBOX HEAT RETENTION & EFFICIENCIES -
  - OPTIONS IN SOLID OR PERFORATED FLUE -

Note: The dimensions and clearances are for reference only. Refer to the Owner's Manual for operation and exact specifications prior to installation. Colours of woodheaters shown are as close as four colour process printing methods allow. Zero clearance options are available for all Insert models, consult your local dealer for further information. Installation should be carried out by a qualified installer. Flue kits to be installed strictly in accordance with AS/NZS 2918. All fireplace Inserts must be installed in a brick masonry chimney or Eureka Zero Clearance Cabinet (EZCC) and be fully flued. Eureka woodheaters conform to AS/NZS 2918, AS/NZS 4012/4013, however Eureka accepts no liability whatsoever for interpretation. All heating capacities quoted are based on units tested with quality hardwood. Performance reduction may result due to large glassed areas, vaulted ceilings, drafts or insufficient insulation. Eureka Woodheating reserves the right to change specifications without notice. All dimensions and clearances are in millimetres (mm). † Peak efficiency % quoted. ‡ Mantle deflector required, refer to the relevant installation instructions. † Minimum hearth depth in front of unit can be reduced by raising appliance above combustible materials.



AF Gason Pty Ltd  
Phone: 03 9763 2700  
Fax: 03 9763 0836  
eureka@gason.com.au  
www.eureka-heating.com

Your Selected Eureka Dealer

